

General information: predominantly *P. vivax*. Transmission occurs throughout the year.

Protective recommendations:

Chemoprophylaxis is recommended for all travelers: throughout the department of Islas de la Bahía; altitudes below 1,000 m (3,300 ft) in the eastern half of the country and in some western and southern districts (see map); all cities and towns within these areas except the central urban areas of El Progreso and La Ceiba.

Chemoprophylaxis is recommended for certain travelers (see Issues to Consider inset): altitudes below 1,000 m in some western and southern districts (see map); the city outskirts of Tegucigalpa; all other cities and towns within these areas except San Pedro Sula and the central urban areas of Tegucigalpa and Choloma.

Insect precautions only are recommended (negligible transmission is reported): altitudes below 1,000 m in some western and southern districts (see map); all cities and towns within these areas; the central urban areas of Choloma, El Progreso, and La Ceiba.

No protective measures are necessary (no evidence of transmission exists): the central urban area of Tegucigalpa; altitudes above 1,000 m (see map); all other areas not mentioned above.

Protective measures: Evening and nighttime insect precautions are essential in areas with any level of transmission. Chloroquine is protective in this country.

Issues for Medical Providers to Consider

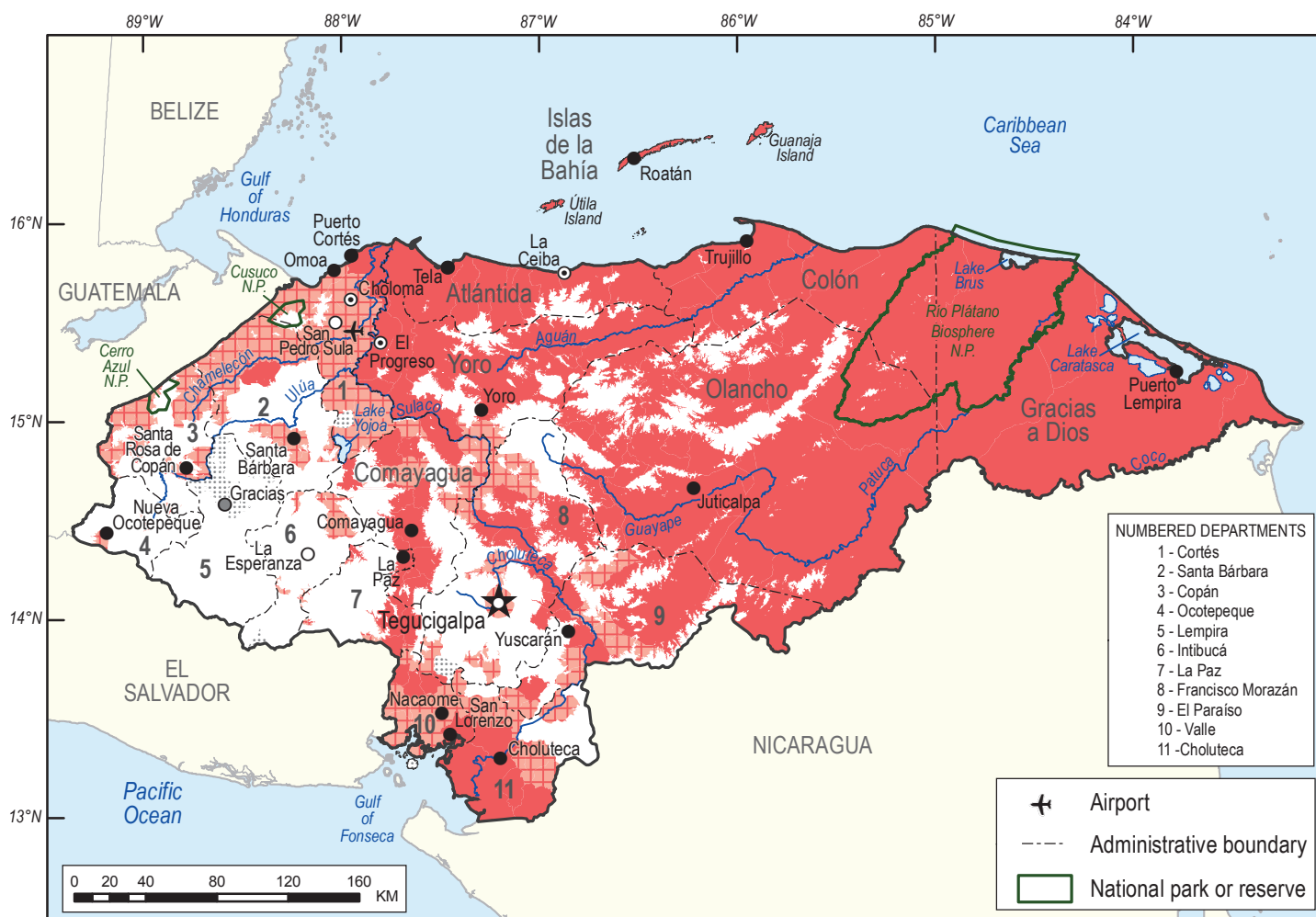
Factors favoring chemoprophylaxis

- Adventure travel
- Risk-averse and vulnerable travelers
- Areas subject to infrequent epidemics
- Immigrants visiting friends and relatives
- Flexible itineraries
- Travel longer than 1 month
- Unreliable medical expertise and/or treatment drugs at destination

Factors against chemoprophylaxis

- Air-conditioned hotels only
- Urban areas only
- Non-transmission season
- Minimal nighttime exposure
- Travel shorter than 3 days

See the "Technical Explanation of Malaria Mapping" document for more information.



KEY for Malaria Protective Recommendations — Evening and nighttime insect precautions are essential in areas with any level of transmission.

- Chemoprophylaxis is recommended for all travelers*
- Chemoprophylaxis is recommended for certain travelers; see *Issues to Consider* inset above
- Insect precautions only are recommended* (negligible transmission reported)
- No protective measures are necessary (no evidence of malaria transmission exists)

- City where protective recommendations are the same as the surrounding region
- City where insect precautions only are recommended* (negligible transmission reported)
- City where insect precautions only are recommended in central urban areas*; at city outskirts protective recommendations are the same as the surrounding region
- City where no protective measures are necessary (no evidence of malaria transmission exists)
- ★ National capital (no protective measures are necessary in central urban areas; at city outskirts protective recommendations are the same as the surrounding region)

* RARE EXCEPTIONS APPLY. SEE THE TECHNICAL EXPLANATION OF MALARIA MAPPING DOCUMENT FOR MORE INFORMATION.